

Mekkora a vízlábnyoma?

Minden termékhez (kék lap) tartozik egy vízmennyiség (sárga lap).

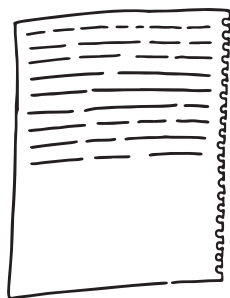
Keresd meg a párokat!

A feladat megoldása után fordítsd meg a lapot, hogy ellenőrizd a tudásodat!

Vízlábnyom = ennyi vizet használnak fel az adott termék előállításához.

A marhahús esetén például a szarvasmarha által elfogyasztott víz mellett a takarmány öntözéséhez szükséges vizet is beleszámítják.

Megoldókulcs



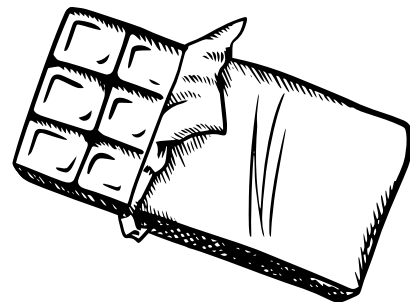
1 db. rajzlap

10 liter



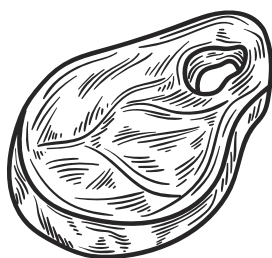
1 kg búza

1000 liter



100 g csokoládé

1700 liter



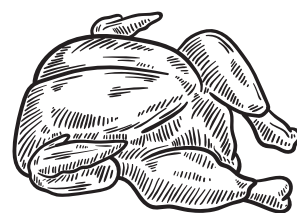
1 kg marhahús

13 000 liter



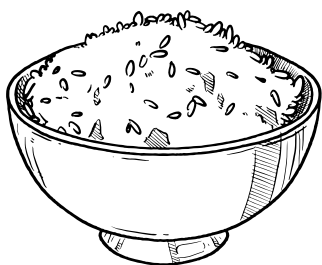
1 csésze kávé

140 liter



1 kg csirkehús

4300 liter



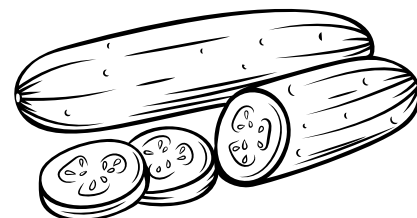
1 kg rizs

1400 liter



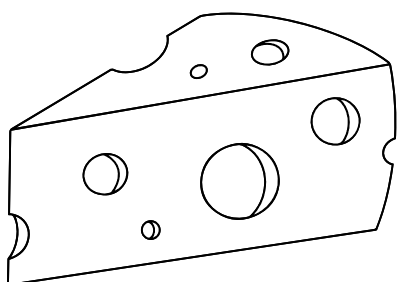
1 db. poló

2700 liter



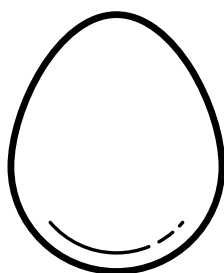
1 kg uborka

350 liter



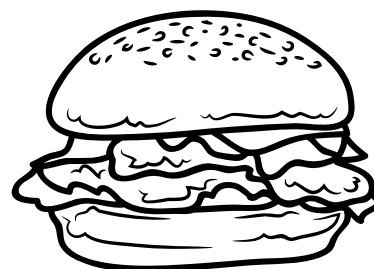
1 kg sajt

3200 liter



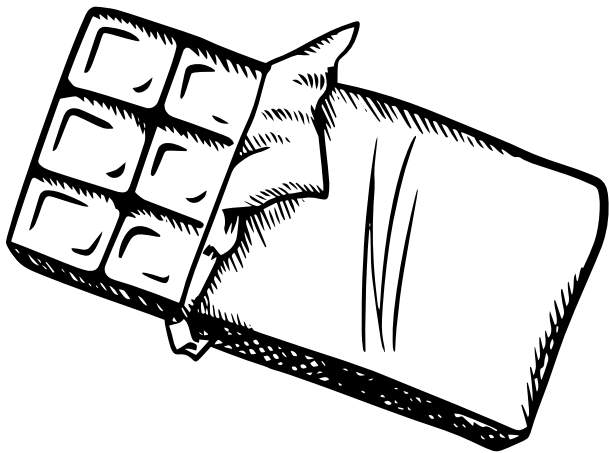
1 tojás

135 liter

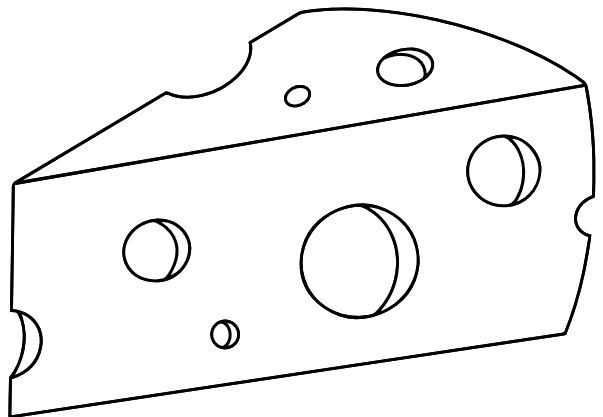


1 hamburger

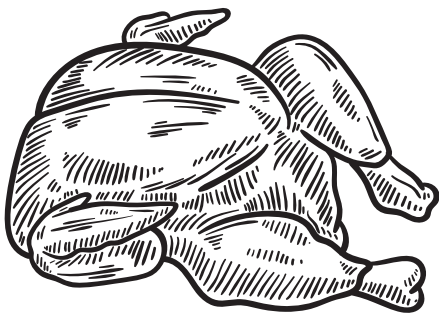
2400 liter



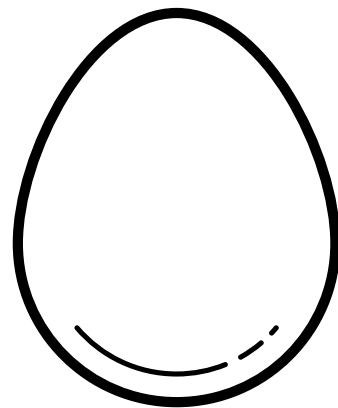
100 g csokoládé



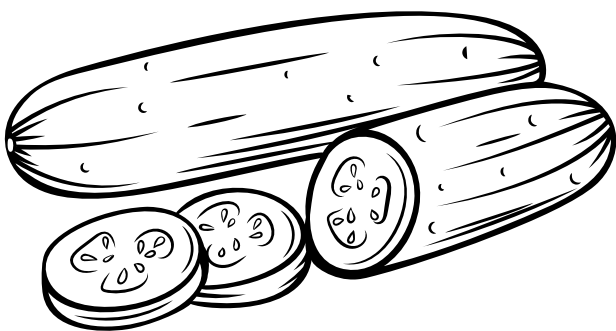
1 kg sajt



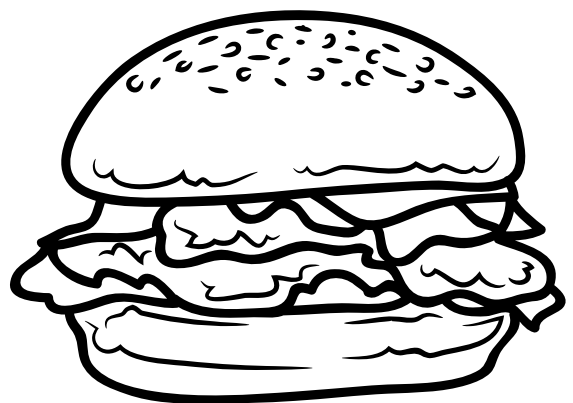
1 kg csirkehús



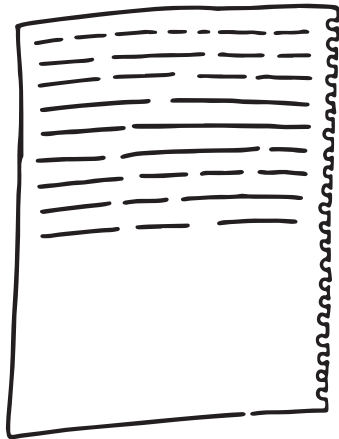
1 tojás



1 kg uborka



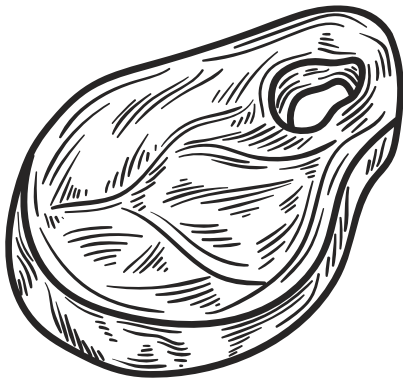
1 hamburger



1 db. rajzlap



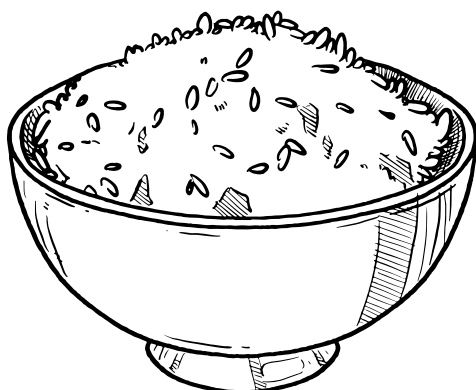
1 kg búza



1 kg marhahús



1 csésze kávé



1 kg rizs



1 db. poló

10 liter

1000 liter

1400 liter

13 000 liter

140 liter

2700 liter

2400 liter

1700 liter

135 liter

4300 liter

350 liter

3200 liter